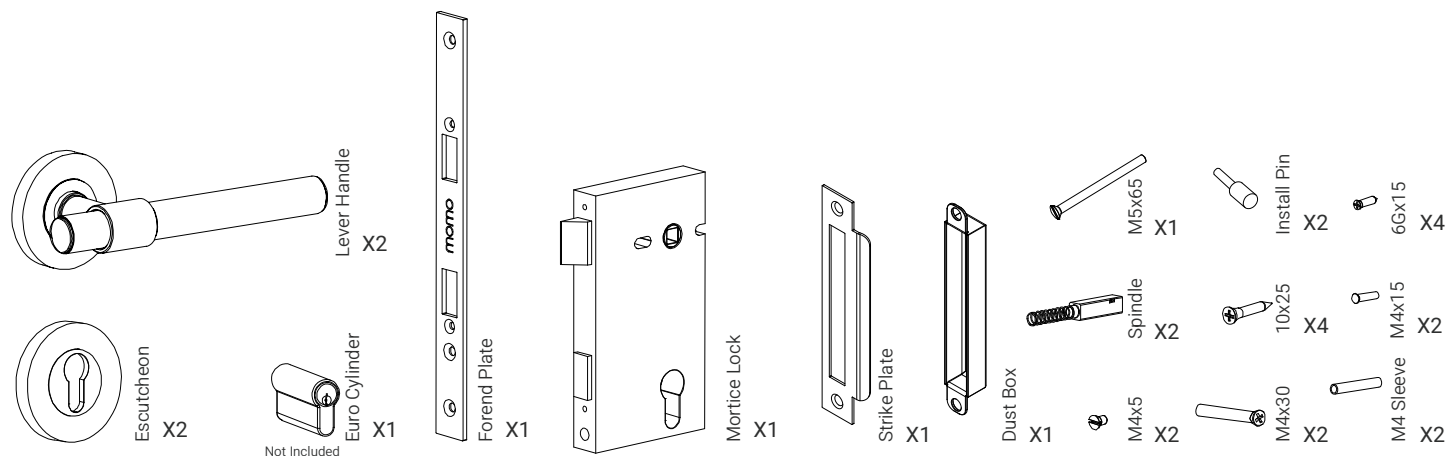


Installation Instructions

Belgravia Lever. Privacy Mortice, Barrel and Strike Install

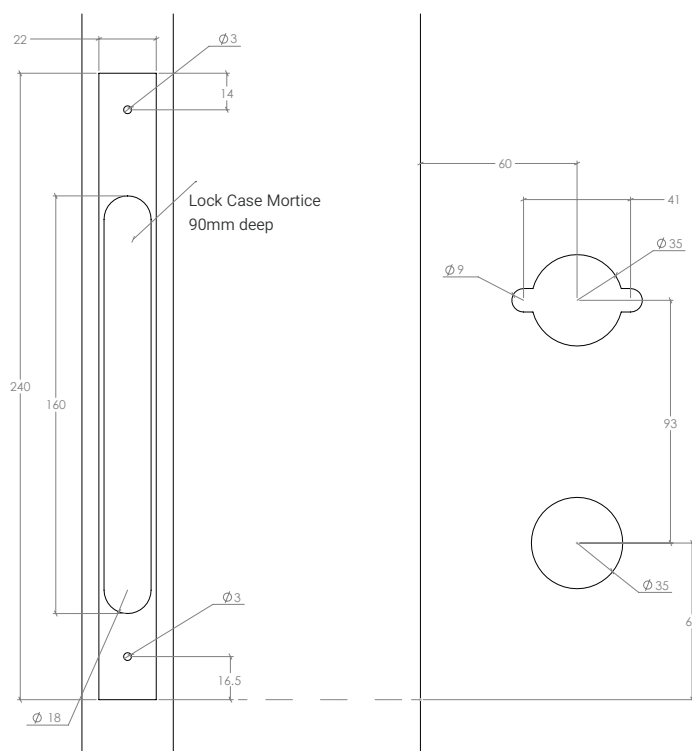
MO
MO
HANDLES

1. Components

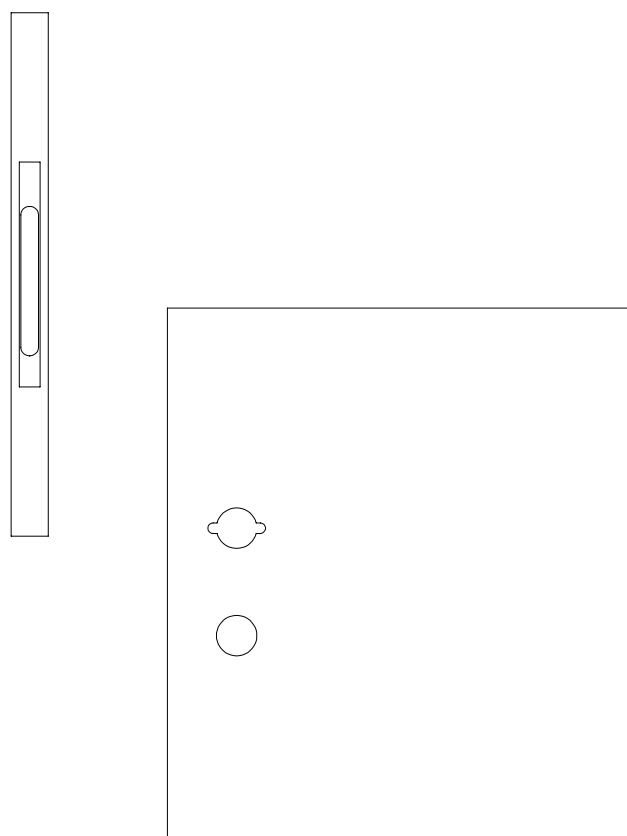


2.

Mortice lock and lever drilling dimensions



3.



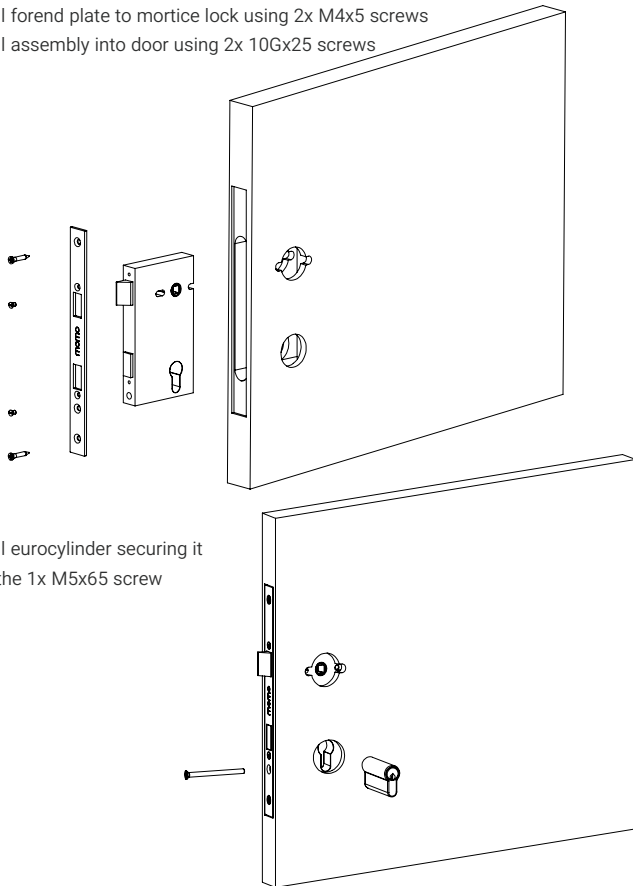
Installation Instructions

Belgravia Lever. Privacy Mortice, Barrel and Strike Install

**MO
MO
HANDLES**

4.

Install forend plate to mortice lock using 2x M4x5 screws
Install assembly into door using 2x 10Gx25 screws

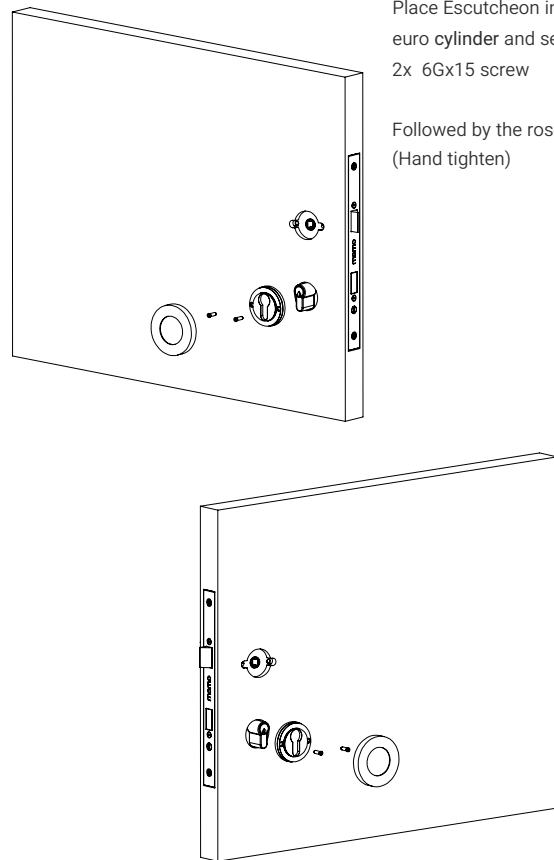


Install eurocylinder securing it with the 1x M5x65 screw

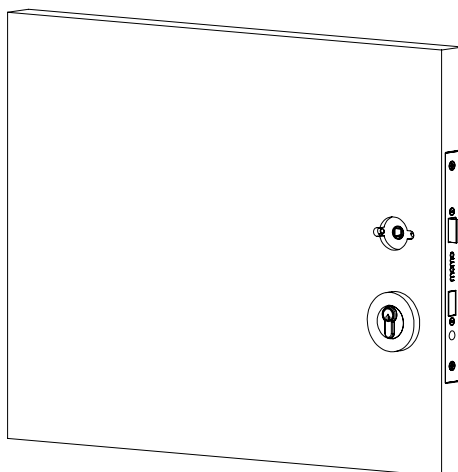
5.

Place Escutcheon inner rosette over euro cylinder and secure with 2x 6Gx15 screw

Followed by the rosette cover (Hand tighten)



6.

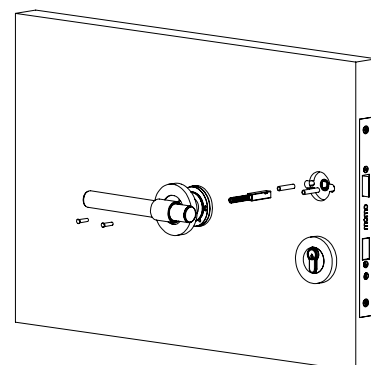


7.

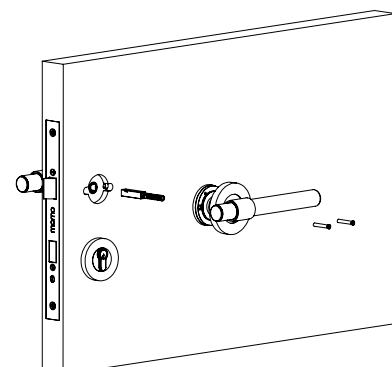
Loosen rosette cover from lever and install 2x M4x15 screw to the Lever

Tighten with the 2x M4 sleeves and insert spindle, spring side first into the lever handle

Install assembly into door



Repeat above step hand tightening M4x30 screws



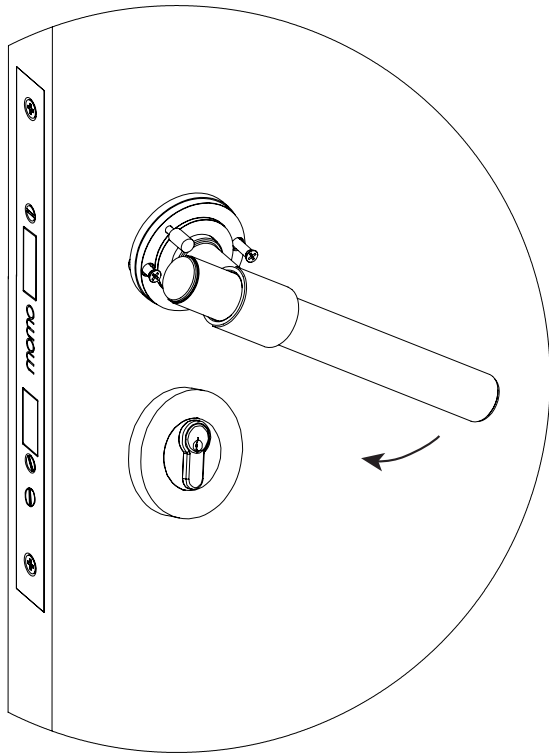
Installation Instructions

Belgravia Lever. Privacy Mortice, Barrel and Strike Install

MO
MO
HANDLES

8.

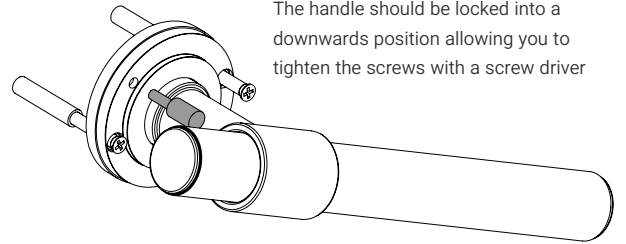
Rotate lever handle down to gain better access to the 2x M4x30 Screws



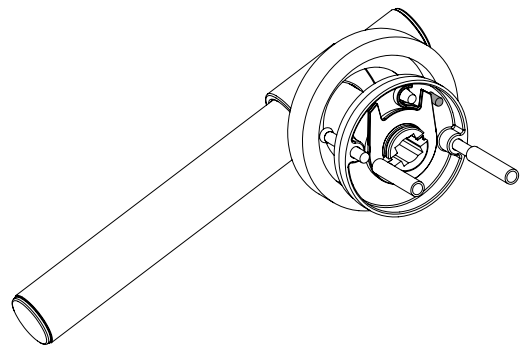
9.

Insert pin into rosette and release lever

The handle should be locked into a downwards position allowing you to tighten the screws with a screw driver

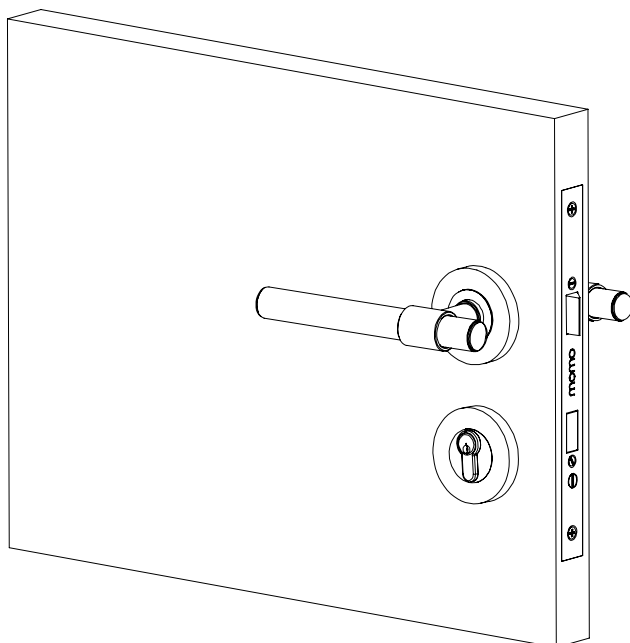


Rear-view of lever showing install pin in position.



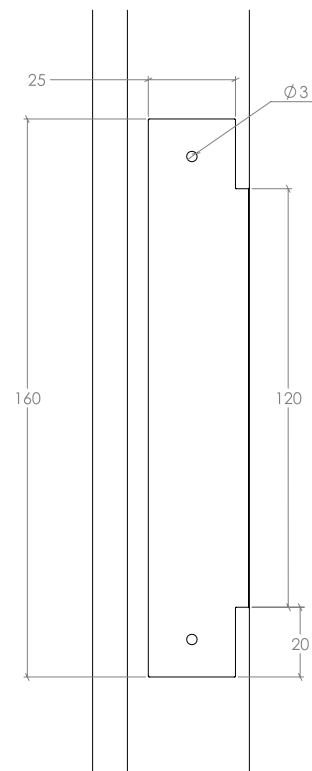
10.

Once secured, reinstall rosette covers by hand



11.

Strike plate installation dimensions



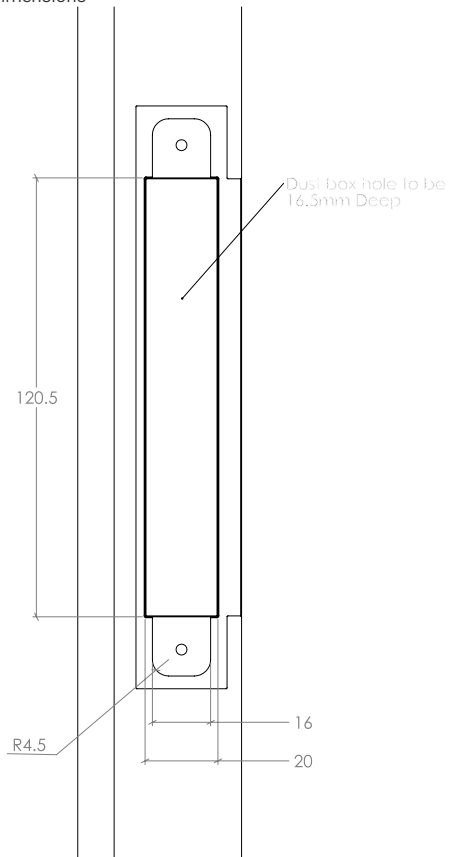
Installation Instructions

Belgravia Lever. Privacy Mortice, Barrel and Strike Install

MO
MO
HANDLES

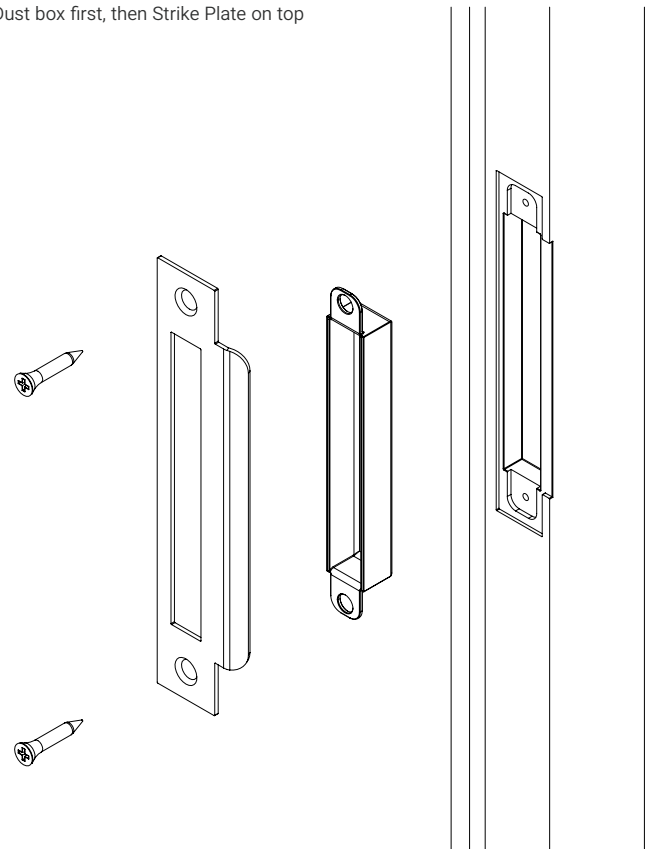
12.

Dust plate installation dimensions



13.

Install 2x 10Gx25 screw along with
Dust box first, then Strike Plate on top



14.

