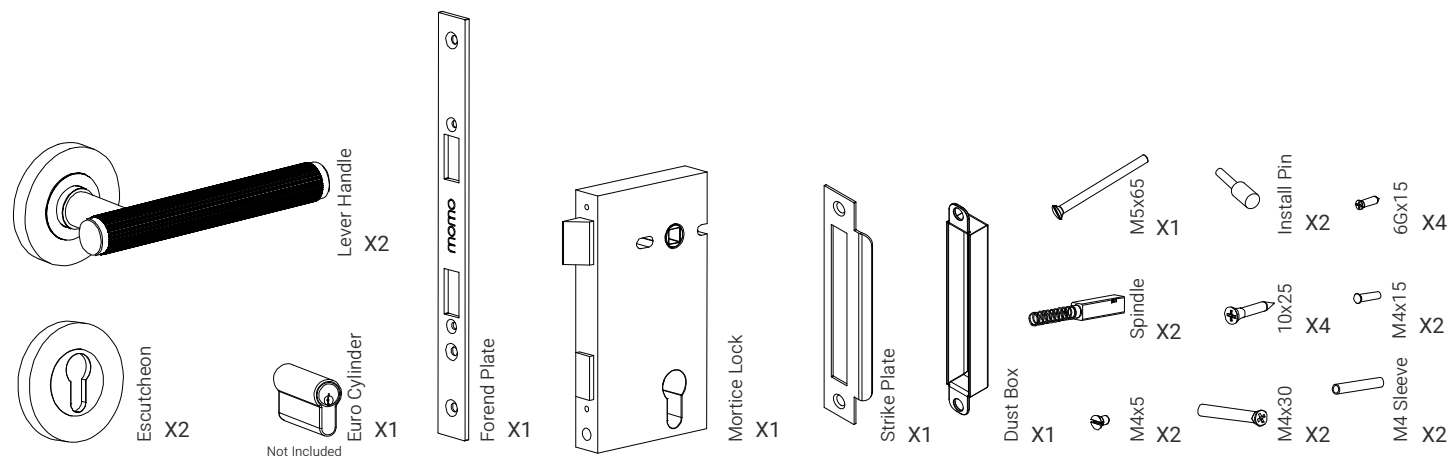


# Installation Instructions

Bellevue Lever. Privacy Mortice, Barrel and Strike Install

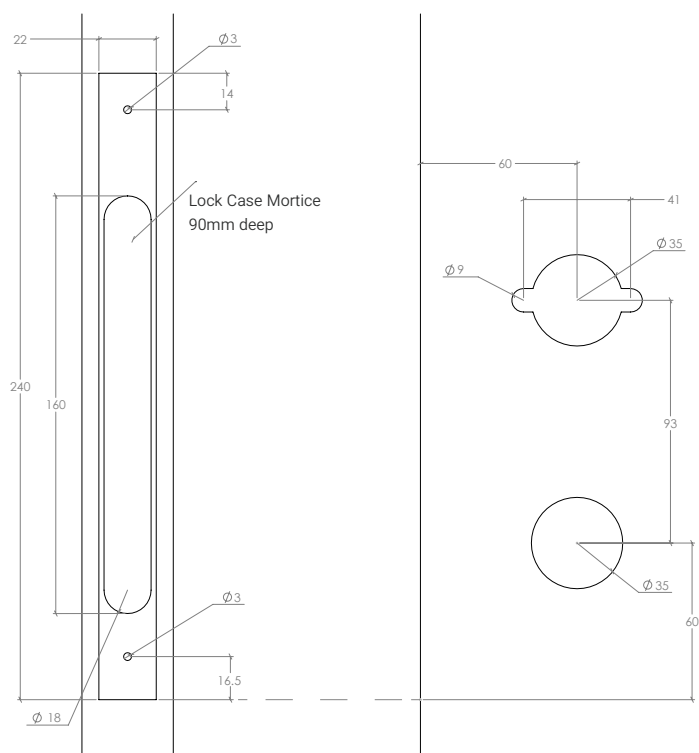
MO  
MO  
HANDLES

## 1. Components

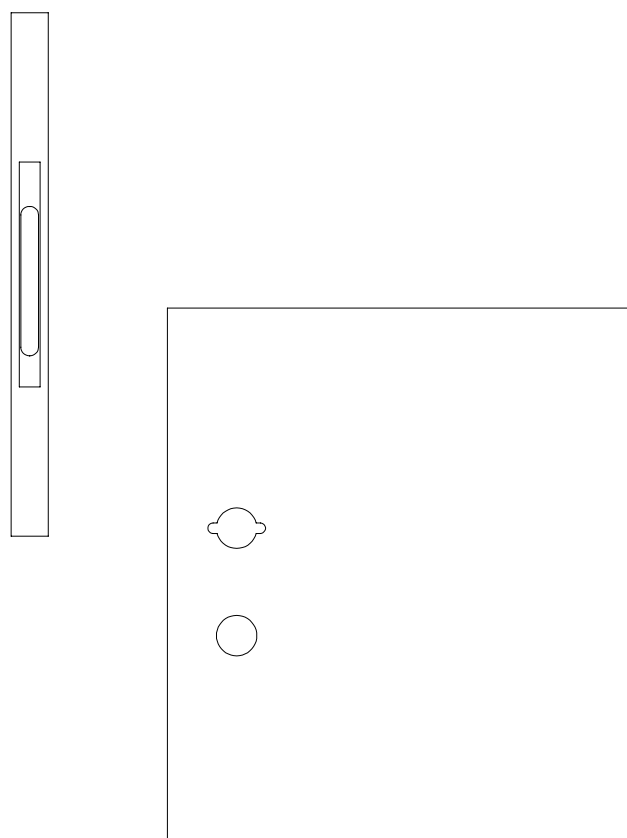


## 2.

Mortice lock and lever drilling dimensions



## 3.



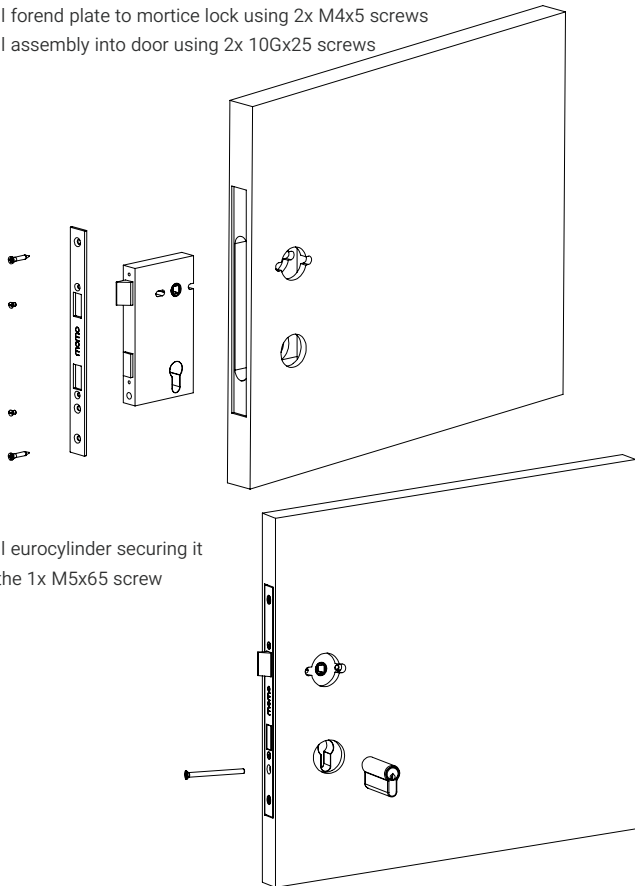
# Installation Instructions

Aspen Lever. Privacy Mortice, Barrel and Strike Install

MO  
MO  
HANDLES

4.

Install forend plate to mortice lock using 2x M4x5 screws  
Install assembly into door using 2x 10Gx25 screws

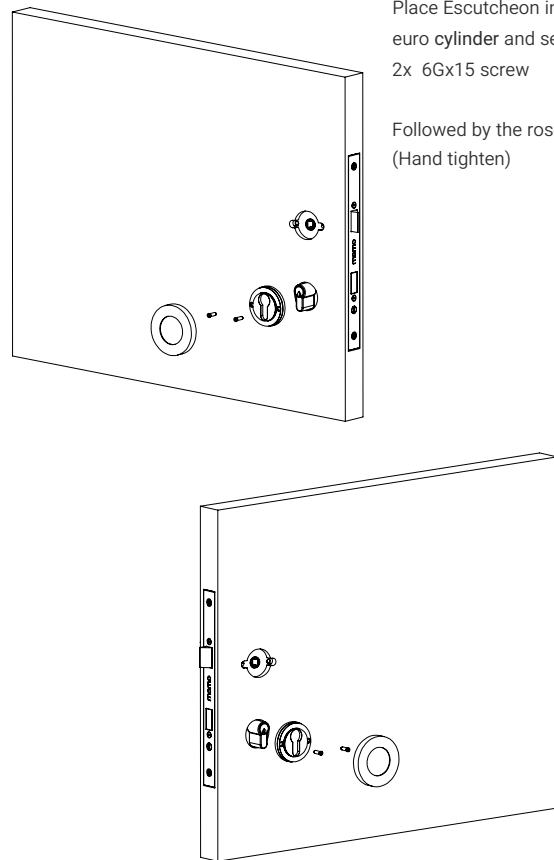


Install eurocylinder securing it  
with the 1x M5x65 screw

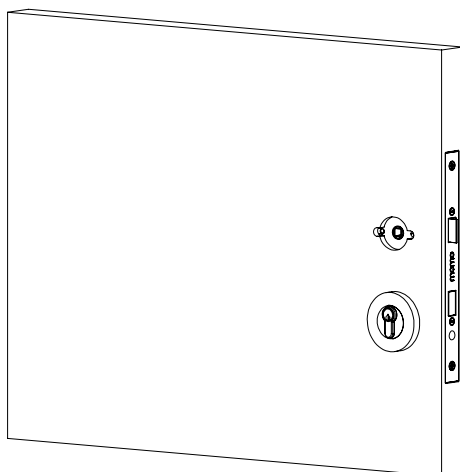
5.

Place Escutcheon inner rosette over  
euro cylinder and secure with  
2x 6Gx15 screw

Followed by the rosette cover  
(Hand tighten)



6.

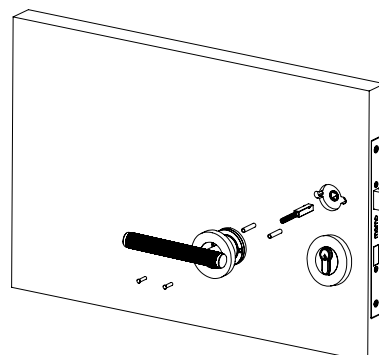


7.

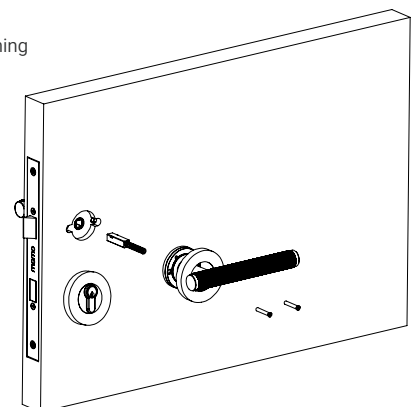
Loosen rosette cover from lever and  
install 2x M4x15 screw to the Lever

Tighten with the 2x M4 sleeves and  
insert spindle, spring side first into  
the lever handle

Install assembly into door



Repeat above step hand tightening  
M4x30 screws



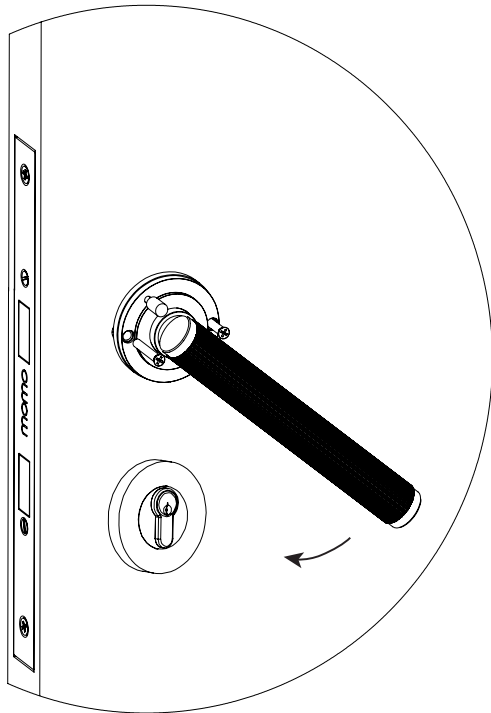
# Installation Instructions

Aspen Lever. Privacy Mortice, Barrel and Strike Install

MO  
MO  
HANDLES

8.

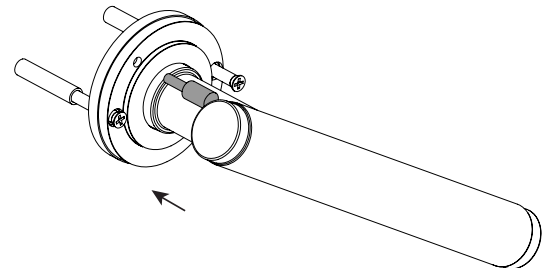
Rotate lever handle down to gain better access to the 2x M4x30 Screws



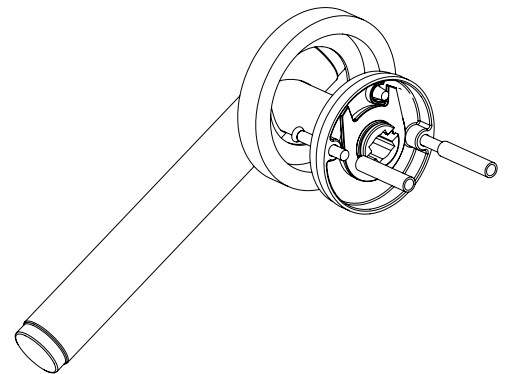
9.

Insert pin into rosette and release lever

The handle should be locked into a downwards position allowing you to tighten the screws with a screw driver

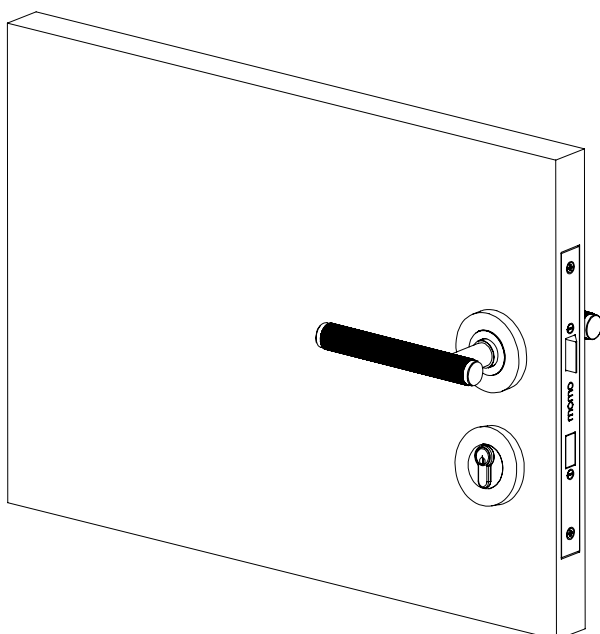


Rear-view of lever showing install pin in position.



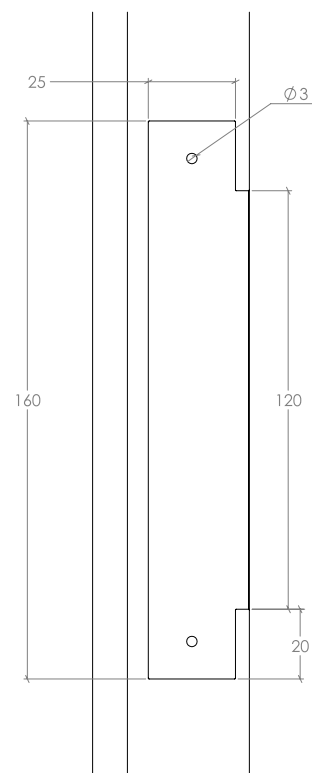
10.

Once secured, reinstall rosette covers by hand



11.

Strike plate installation dimensions



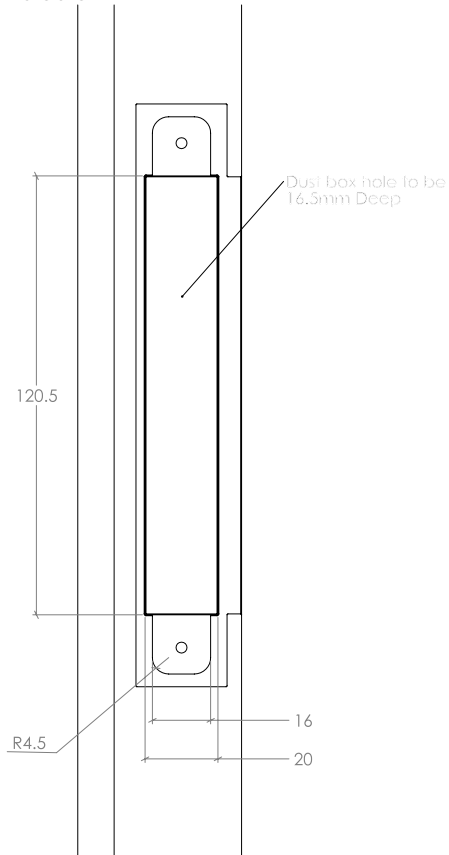
# Installation Instructions

Aspen Lever. Privacy Mortice, Barrel and Strike Install

MO  
MO  
HANDLES

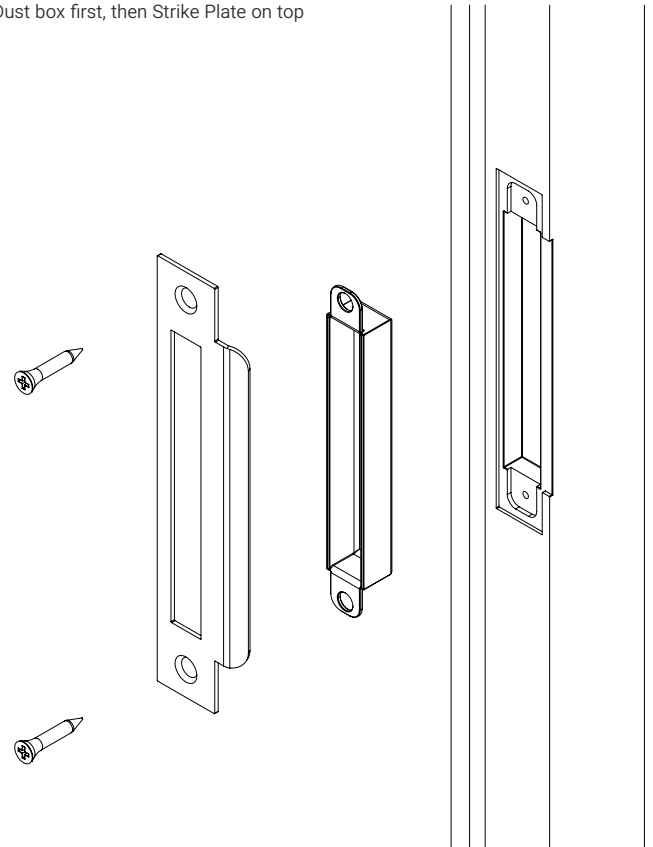
12.

Dust plate installation dimensions



13.

Install 2x 10Gx25 screw along with  
Dust box first, then Strike Plate on top



14.

